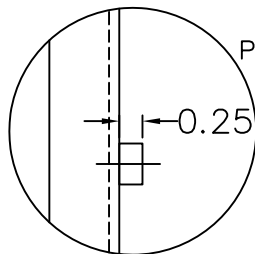


ENLARGED VIEW



PEM NUTS FOR COMPONENT MOUNTING DO NOT EXTEND MORE THAN 0.25" BEYOND PANEL SURFACE

IF BOTTOM OF ENCLOSURE IS NOT VENTILATED, MOUNT 50 & 100AMP PANELS A MINIMUM OF 6" FROM THE BOTTOM OF THE ENCLOSURE TO ALLOW FOR PROPER AIR FLOW.

HEAT LOSSES = 1700 WATTS
AIRFLOW REQ. = 500 CFM

<p>THIS DRAWING AND ALL INFORMATION CONTAINED HEREIN IS THE PROPERTY OF MESTA ELECTRONICS, INC. AND MAY NOT BE COPIED, REPRODUCED, OR DIVULGED TO UNAUTHORIZED PERSONS WITHOUT THE WRITTEN PERMISSION OF MESTA ELECTRONICS, INC. FOR THE CONVENIENCE OF THE USER AND SHALL BE RETURNED UPON REQUEST. ©1999 MESTA ELECTRONICS ALL RIGHTS RESERVED</p>		<p>UNLESS OTHERWISE SPECIFIED: DIMENSIONS ARE IN INCHES UNLESS OTHERWISE SPECIFIED PER ASME Y14.5M-1994 TOLERANCES: .XX ±.03 .XXX ±.015 ANGLES ±.1° THIRD ANGLE PROJECTION</p>	<p>SCALE 1:1 DATE 02/28/2019 DTR DLL ENR PL</p>	<p>MEI MESTA ELECTRONICS, INC. CUSTOMER MESTA ELECTRONICS CUST. ORDER STD. NUMBER</p>	<p>TITLE 100AMP DPM 3rd GEN ACTIVE FILTER PANEL LAYOUT DWG NO 46000029 REV - CADD FILE 46000029-1 SHEET NO 1 OF 1</p>
<p>REVISIONS</p>					