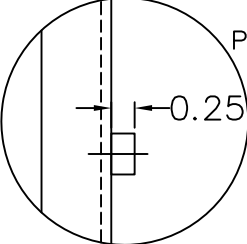
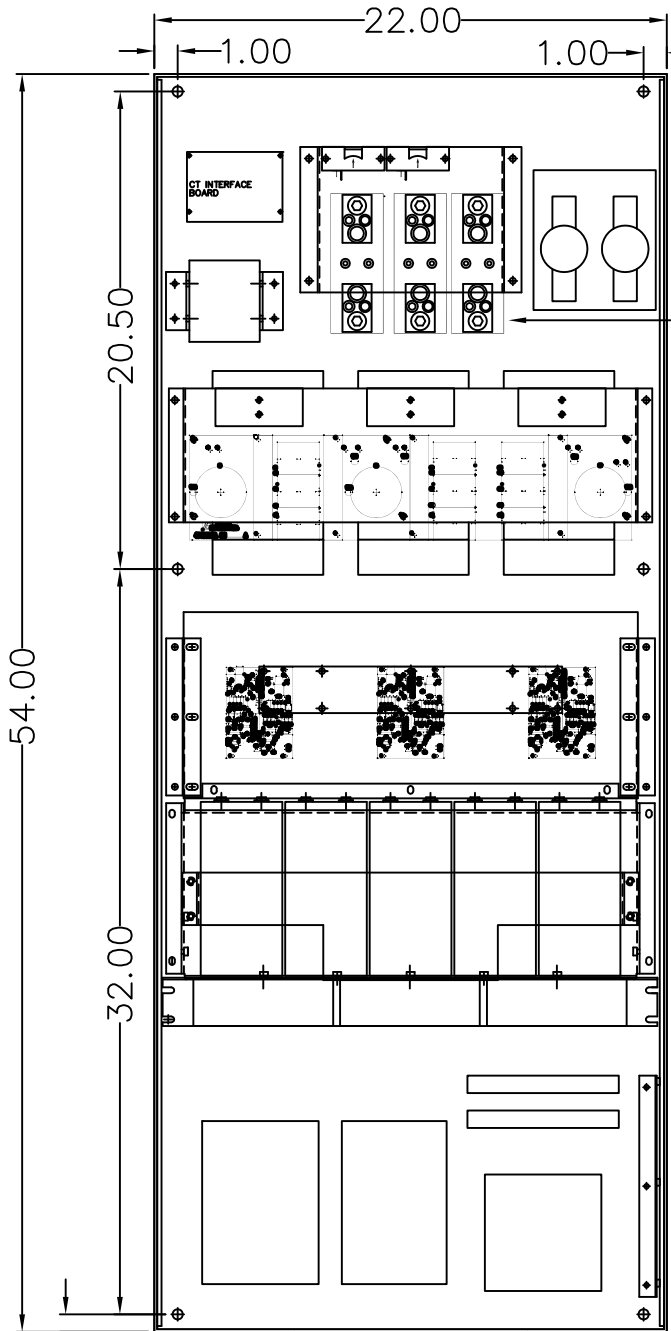


ENLARGED VIEW



PEM NUTS FOR COMPONENT MOUNTING DO NOT EXTEND MORE THAN 0.25" BEYOND PANEL SURFACE



INPUT POWER TERMINALS

0.75
MTG HOLE
0.438" DIA
(6PLCS)

AIR FLOW DIRECTION

13.54

HEAT LOSSES = 3300 WATTS
AIRFLOW REQ. = 900 CFM

<p>UNLESS OTHERWISE SPECIFIED: ALL DIMENSIONS ARE IN INCHES DIMENSIONS ARE TO CENTER UNLESS NOTED OTHERWISE TOLERANCES: .XX ± .03 .XXX ± .015 ANGLES ± 1° THIRD ANGLE PROJECTION</p>		<p>SCALE: 1:1</p>	<p>DATE: 02/28/2019 DWG: DLL ENGR: PL</p>	<p>DATE: 02/28/2019 DWG: DLL ENGR: PL</p>	<p>DATE: 02/28/2019 DWG: DLL ENGR: PL</p>
<p>THIS DRAWING AND ALL INFORMATION CONTAINED HEREIN IS THE PROPERTY OF MESTA ELECTRONICS, INC. AND IS NOT TO BE COPIED, REPRODUCED, OR DIVULGED TO ANY OTHER PERSONS WITHOUT THE WRITTEN PERMISSION OF MESTA ELECTRONICS, INC. FOR THE CONVENIENCE OF THE USER AND TO PROTECT THE INTERESTS OF MESTA ELECTRONICS, INC. ALL RIGHTS RESERVED.</p>		<p>MESTA ELECTRONICS, INC. CUSTOMER: MESTA ELECTRONICS</p>		<p>TTM 200AMP DPM 3rd GEN ACTIVE FILTER PANEL LAYOUT DWG NO 46000027 REV - CADD FILE 46000027-1 SHEET NO 1 OF 1</p>	
<p>REVISIONS</p>		<p>MEI MESTA ELECTRONICS, INC.</p>		<p>Customer: MESTA ELECTRONICS</p>	