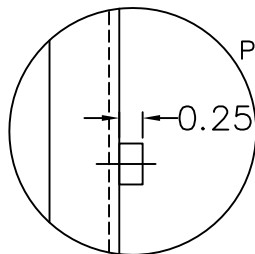
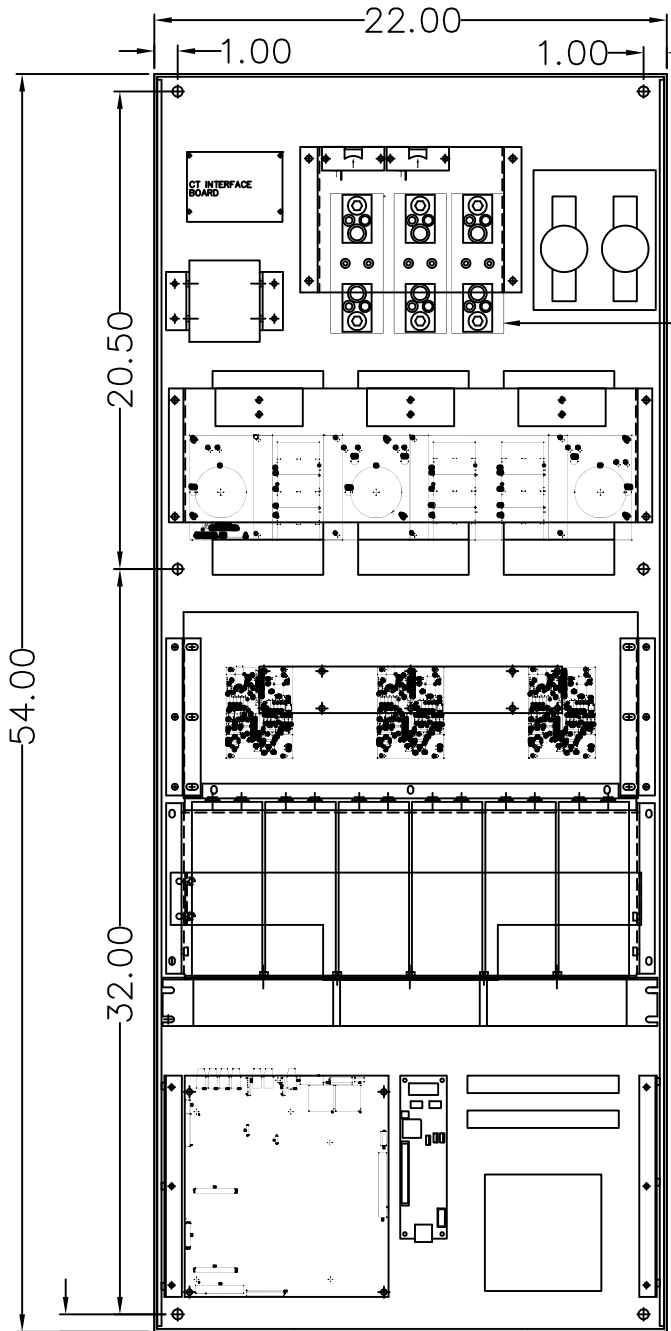


ENLARGED VIEW



PEM NUTS FOR COMPONENT MOUNTING DO NOT EXTEND MORE THAN 0.25" BEYOND PANEL SURFACE



INPUT POWER TERMINALS

0.75

MTG HOLE  
0.438" DIA  
(6PLCS)

AIR FLOW DIRECTION

12.54

HEAT LOSSES = 2500 WATTS  
AIRFLOW REQ. = 800 CFM

<p>UNLESS OTHERWISE SPECIFIED: ALL DIMENSIONS ARE IN INCHES INTERFERENCES PER ASME Y14.5M-1994 TOLERANCES: .XX ± .03 .XXX ± .015 ANGLES ± 1° THIRD ANGLE PROJECTION</p>		<p>SCALE 1:1</p>
<p>THIS DRAWING AND ALL INFORMATION HEREON IS THE PROPERTY OF MESTA ELECTRONICS, INC. AND MAY NOT BE COPIED, REPRODUCED, OR DIVULGED TO UNAUTHORIZED PERSONS WITHOUT THE WRITTEN PERMISSION OF MESTA ELECTRONICS, INC. THIS DRAWING IS FOR THE CONVENIENCE OF THE USER AND SHALL BE RETURNED UPON REQUEST. ©1999 MESTA ELECTRONICS ALL RIGHTS RESERVED</p>		<p>DATE 03/25/14 DTR DLL ENR PL</p>
<p>MESTA ELECTRONICS, INC. CUSTOMER MESTA ELECTRONICS</p>		<p>DATE 03/25/14 DTR DLL ENR PL</p>
<p>150AMP DPM 2ND GEN ACTIVE FILTER PANEL LAYOUT</p>		<p>DATE 03/25/14 DTR DLL ENR PL</p>
<p>DWG NO 46000020 REV -</p>		<p>DATE 03/25/14 DTR DLL ENR PL</p>
<p>CAD FILE 46000020-1</p>		<p>DATE 03/25/14 DTR DLL ENR PL</p>
<p>SHEET NO 1 OF 1</p>		<p>DATE 03/25/14 DTR DLL ENR PL</p>

REVISIONS