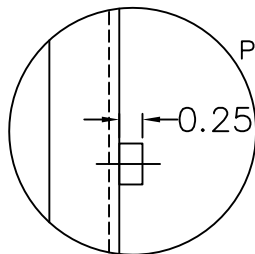


ENLARGED VIEW



PEM NUTS FOR COMPONENT MOUNTING DO NOT EXTEND MORE THAN 0.25" BEYOND PANEL SURFACE

45.00

17.25

16.90

1.00

1.00

26.25

0.75

INPUT POWER TERMINALS

AIR FLOW DIRECTION

MTG HOLE 0.438" DIA (6PLCS)

AIR FLOW DIRECTION

12.70

IF BOTTOM OF ENCLOSURE IS NOT VENTILATED, MOUNT 50 & 100AMP PANELS A MINIMUM OF 6" FROM THE BOTTOM OF THE ENCLOSURE TO ALLOW FOR PROPER AIR FLOW.

HEAT LOSSES = 900 WATTS
AIRFLOW REQ. = 375 CFM

| | |
|----------|--|
| TITLE | 50AMP DPM 2ND GEN ACTIVE FILTER PANEL LAYOUT |
| DWG NO | 46000018 |
| REV | - |
| CAD FILE | 46000018-1 |
| SHEET NO | 1 |
| OF | 1 |

| | |
|--------------------------------|-------------------|
| | |
| MESTA ELECTRONICS, INC. | |
| CUSTOMER | MESTA ELECTRONICS |
| ORDER NUMBER | STD |

| | |
|-------|----------|
| SCALE | 1:1 |
| DATE | 03/24/14 |
| DATE | DLL |
| DATE | PL |

UNLESS OTHERWISE SPECIFIED:
ALL DIMENSIONS ARE IN INCHES UNLESS NOTED OTHERWISE
TOLERANCES: .XX ±.03
 .XXX ±.015
 ANGLES ±.1°
THIRD ANGLE PROJECTION

THIS DRAWING AND ALL INFORMATION CONTAINED HEREIN IS THE PROPERTY OF MESTA ELECTRONICS, INC. AND MAY NOT BE COPIED, REPRODUCED, OR DIVULGED TO UNAUTHORIZED PERSONS WITHOUT THE WRITTEN PERMISSION OF MESTA ELECTRONICS, INC. FOR THE CONVENIENCE OF THE USER AND SHALL BE RETURNED UPON REQUEST.
©1999 MESTA ELECTRONICS ALL RIGHTS RESERVED

| | |
|-----------|--|
| REVISIONS | |
|-----------|--|

A B C D E F G H J K L M N P R S T