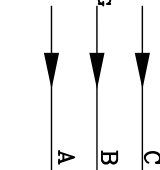


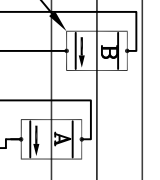
THIRD CT "C" REQUIRED IF LINE TO NEUTRAL LOADS ARE PRESENT

Note: For parallel unit installation CT's must be installed on the load side of the DPM power connection point.

CUSTOMER INCOMING POWER



CURRENT SENSORS



CUSTOMER LOAD

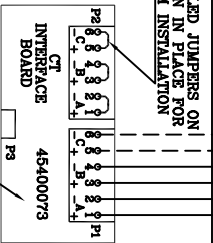


IMPORTANT!
INSTALL CURRENT SENSORS WITH THE ARROWS, AND THE A,B,(C) MARKINGS ON EACH SENSOR AS SHOWN ABOVE. INSTALLATION ON PROPER PHASE AND IN CORRECT DIRECTION IS CRITICAL. BLACK WIRE ON MESTA SUPPLIED (FLEX-CORE) CT'S IS POSITIVE (+)

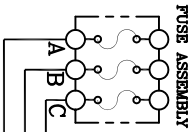
Danger!

Secondary leads of CT's(current sensors) must be properly terminated on P1 of the CT Interface Board (with a tightening torque of 4 in.lb) BEFORE the circuit being measured by the CT's is energized. Failure to do so may result in **LETHAL VOLTAGE** and severe damage to the CT's.

FACTORY INSTALLED JUMPERS ON P2 MUST REMAIN IN PLACE FOR SINGLE SYSTEM INSTALLATION



ATTENTION!
Always connect first 2 CTs to terminals A & B of P1. Terminal C is only used for a 3rd CT.



BRANCH CIRCUIT PROTECTION DEVICE SUPPLIED BY CUSTOMER. SEE NOTES 1 & 2

ETHERNET COMMUNICATIONS R445 REAR OF DISPLAY



OPTIONAL COMMUNICATIONS R445 REAR OF DISPLAY

CONNECT TO A POINT ON THE ENCLOSURE EXTERIURE TO COMPLY WITH LOCAL AND NATIONAL ELECTRICAL CODE.

PANEL FRONT VIEW

- INSTALLATION NOTES:**
- Carefully read the installation section of the owner's manual prior to installing this equipment.
 - Mesta DPM is a parallel installed device. Input connections specified are the only power connections to be made.
 - Branch Circuit Protection Device Current Rating: 70 Amperes. (Supplied by Customer)
 - Input Wiring Current Rating: 70 Amperes.
- Input wiring size should be selected according to the current rating indicated above and in accordance with the applicable national and local electric codes.

REVISIONS

REV	DATE	DESCRIPTION
1	09/26/2018	ISSUE FOR PRODUCTION
2	09/26/2018	ISSUE FOR PRODUCTION
3	09/26/2018	ISSUE FOR PRODUCTION
4	09/26/2018	ISSUE FOR PRODUCTION
5	09/26/2018	ISSUE FOR PRODUCTION
6	09/26/2018	ISSUE FOR PRODUCTION
7	09/26/2018	ISSUE FOR PRODUCTION
8	09/26/2018	ISSUE FOR PRODUCTION
9	09/26/2018	ISSUE FOR PRODUCTION

50 AMP DPM 3RD GEN PNL. CUSTOMER INSTALL. 45900027-1

MESTA ELECTRONICS, INC. 45900027-1

DATE: 09/26/2018

REV: 1

REVISED BY: [Signature]

DESIGNED BY: [Signature]

DATE: 09/26/2018

REV: 1

REVISED BY: [Signature]

DESIGNED BY: [Signature]