

Ⓛ THIRD CT "C" REQUIRED IF LINE TO NEUTRAL LOADS ARE PRESENT

Note: For parallel unit installation CTs must be installed on the load side of the DPM power connection point.

FACTORY INSTALLED WIRE. WIRE LENGTH IS 12FT. (DO NOT LENGTHEN TO BEYOND 40FT. MAX.)

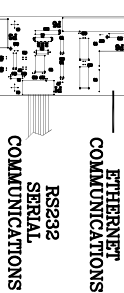
INSTALL CURRENT SENSORS WITH THE ARROWS AND THE A, B, (C) MARKINGS ON EACH SENSOR AS SHOWN ABOVE. INSTALLATION ON PROPER PHASE AND IN CORRECT DIRECTION IS CRITICAL. BLACK WIRE ON MESTA SUPPLIED (FLEX-CORE) CT'S IS POSITIVE(+)

Danger!

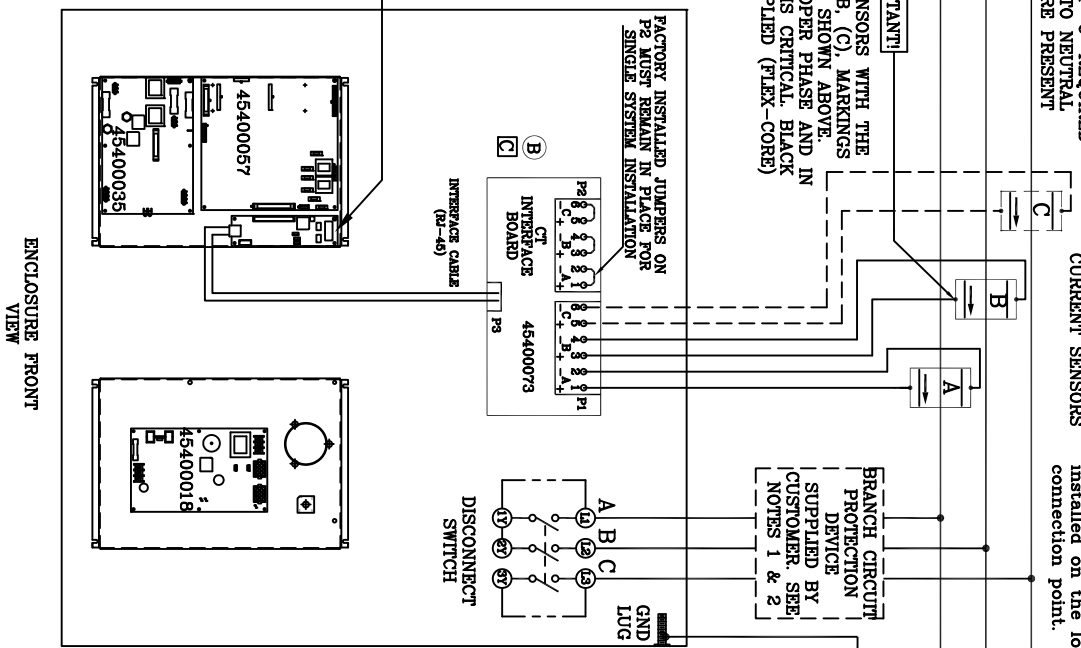
Secondary leads of CT's(current sensors) must be properly terminated on P1 of the CT Interface Board (with a tightening torque of 4 in.lb) BEFORE the circuit being measured by the CT's is energized. Failure to do so may result in LETHAL VOLTAGE and severe damage to the CT's.

STATUS RELAY CONNECTIONS  
0.5amps @ 125 VAC or  
1.0 amp@ 24 VDC

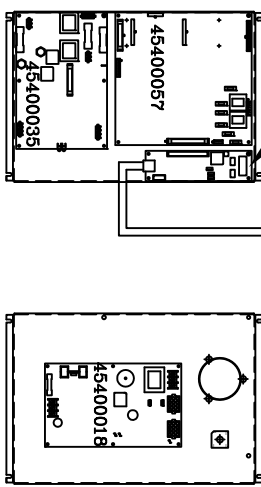
- 6 N.O.
- 7 COMMON
- 8 N.O.
- 9 N.C.
- COMMON 1
- COMMON 2
- COMMON 3
- COMMON 4



45400076.00 CUSTOMER INTERFACE BD.

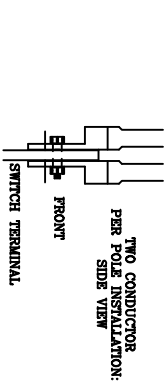


ENCLOSURE FRONT VIEW



- INSTALLATION NOTES:
- Carefully read the installation section of the owner's manual prior to installing this equipment.
  - Mesta DPM is a parallel installed device. Input connections specified are the only power connections to be made.
  - Branch Circuit Protection Device Current Rating: 400 Amps. (Supplied by Customer)
  - Input Wiring Current Rating: 400 Amps (2 conductors per pole)

- Input wiring size should be selected according to the current rating indicated above and in accordance with the applicable national and local electric codes.
- 300 amp DPM Disconnect Switch: two conductors per pole
- The 300 amp DPM disconnect switch is configured for terminal bolt type terminations and requires the use of lug type connectors. Lug connectors should accept an M10 terminal bolt.



| REV | DESCRIPTION  | DATE | BY | CHK |
|-----|--|------|----|-----|
| 1   | Rev. D. REQUIRED IF LINE TO NEUTRAL LOADS ARE PRESENT (06/07/00) |      |    |     |
| 2   | Rev. C. J-C-BOARD 45400073 POLARITY CHANGE (09/28/07)            |      |    |     |
| 3   | Rev. B. J-C-BOARD 45400073 CHANGES TO 45400073. (01/23/07)       |      |    |     |
| 4   | Rev. A. CURRENT SENSOR 'C' MADE OPTIONAL. (11/09/05)             |      |    |     |
| 5   | Rev. F. 2 CONDUCTORS/POLE (12/17/13)                             |      |    |     |
| 6   | Rev. E. J-C-BOARD 45400073 (06/5/09)                             |      |    |     |

| REV | DESCRIPTION  | DATE | BY | CHK |
|-----|--|------|----|-----|
| 1   | Rev. D. REQUIRED IF LINE TO NEUTRAL LOADS ARE PRESENT (06/07/00) |      |    |     |
| 2   | Rev. C. J-C-BOARD 45400073 POLARITY CHANGE (09/28/07)            |      |    |     |
| 3   | Rev. B. J-C-BOARD 45400073 CHANGES TO 45400073. (01/23/07)       |      |    |     |
| 4   | Rev. A. CURRENT SENSOR 'C' MADE OPTIONAL. (11/09/05)             |      |    |     |
| 5   | Rev. F. 2 CONDUCTORS/POLE (12/17/13)                             |      |    |     |
| 6   | Rev. E. J-C-BOARD 45400073 (06/5/09)                             |      |    |     |