



APPLICATION NOTE

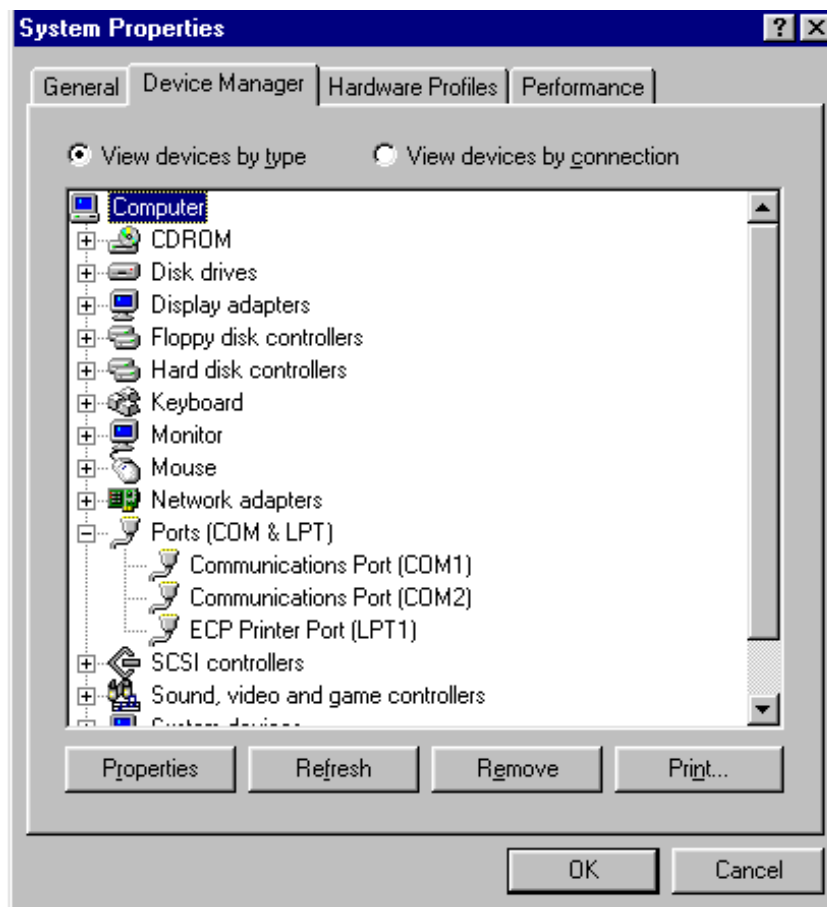
CONFIGURING WINDOWS95/98 HYPERTERMINAL SOFTWARE TO COMMUNICATE WITH MESTA EQUIPMENT

Purpose:

This document reviews all necessary setting that are required for a PC running Windows 95/98 to communicate with a piece of Mesta Electronics, Inc. equipment with an RS232 connection.

Hardware Requirements:

The terminal PC must have a COM port available and enabled. This can be checked by right clicking on the "My Computer" icon located on the desktop, then selecting properties. Under the "Device Manager" tab, check that a COM port is available under the PORTS settings. If a port is not available, consult the computer's User's Manual.



Start Hyperterminal by clicking the Hyperterminal icon under Accessories in the Start Menu. If Hyperterminal is not installed, refer to your Operating System manual for instructions on how to install it.

Creating New Configuration:

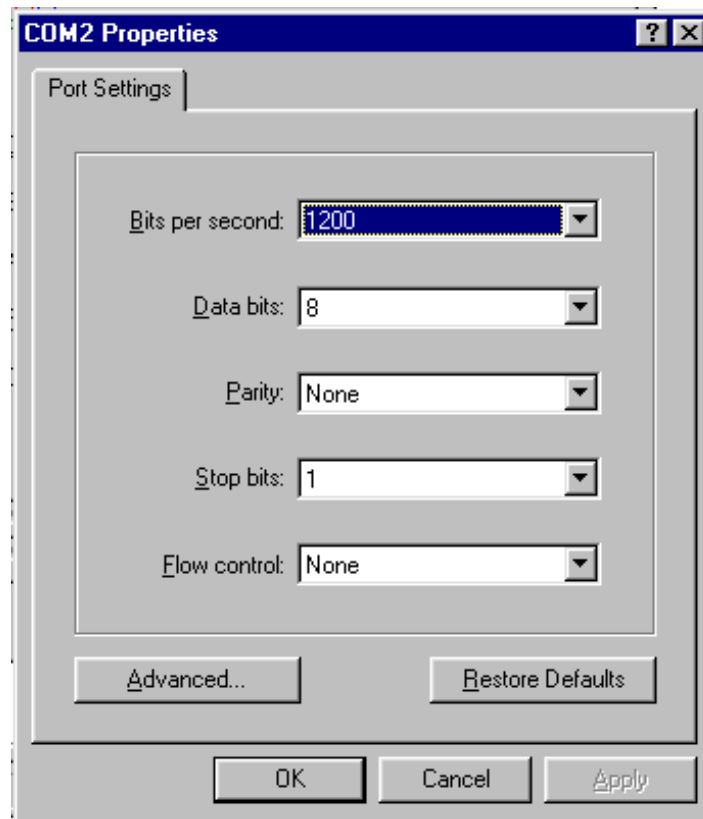
Double click on the Hyperterminal icon in the Hyperterminal group named Hypertrm. A dialog box will appear prompting you to enter the name of the new configuration file. Enter "Mesta" and press OK.



After naming the configuration, another dialog box will appear where the COM port selection is made as shown below:



Now that the port has been selected, the configuration options of the port are presented. Ensure that the configuration of your port is exactly as shown below:



The terminal should now be ready to communicate with the equipment. If an error dialog appears reading "Unable to open port", then review your hardware setting and check that there are not any other devices attempting to use that port (i.e. mouse, modem, IR port, etc...).

Troubleshooting:

In the case that any characters typed at the keyboard appear twice at the terminal, select File->Properties from the Hyperterminal menu bar and select the Setting tab and press the ASCII setting button. Another dialog box will appear. Ensure that the “Echo typed characters locally” option is not selected.

